

FAITHFULLY YOURS



EST 1954



GEELONG OBEDIENCE
DOG CLUB Inc
P.O. BOX 186 GEELONG
VIC. 3220

NOV '95
No. 67

GEELONG OBEDIENCE DOG CLUB INC.
Committee for 1995/96

<u>PRESIDENT</u>	Fred Lehrmann	21 5318	Public Officer
<u>VICE-PRESIDENT (1)</u>	Colin Humphreys	82 2683	Ass. Training Super. Ass. Grounds Manager
<u>VICE-PRESIDENT (2)</u>	Arthur Thorogood	48 7287	Training Supervisor & Bar Manager
<u>SECRETARY</u>	Lisa Blackwell	48 6208	(After 7 pm)
<u>TREASURER</u>	John Bell	56 1970	Property Officer
<u>ASSISTANT SECRETARY & TRIAL SECRETARY</u>	Pam Convery	29 0145	
<u>GENERAL COMMITTEE</u>	Barbara Thorogood	48 7287	Hall Manager
	Lorraine Waldron	48 1012	Canteen Manager
	Christine Cumming	21 8726	Publicity Officer
	Pam Convery	29 0145	Club Shop
	Paul Rockliff	48 2838	Grounds Manager
	Desma Dickeson	78 9585	Ass. Hall Manager & Display Team Leader & Ass. Train- ing Super.
	Joan Vlhovic	57 1889	Social Secretary
<u>NON-COMMITTEE</u>	Elaine Longshaw	55 4603	Newsletter Editor
	Phyllis Bergin		Librarian
	Wendy Bartels	29 6546	Raffle Steward
	Wendy Ganly	78 1800	Club Shop Manager
	Leonie Kelleher	43 1277	Training Manager
	Judy Jones	84 1367	Ass. Librarian
	Nella Ivec	55 2225	

The opinions expressed in this Newsletter are not necessarily those of the Editor or the Geelong Obedience Dog Club Inc. All committee and sub-committee reports bear the name of the respective officer.

ALL CORRESPONDENCE SHOULD BE ADDRESSED TO THE SECRETARY, P.O. BOX 186, GEELONG, V. 3220. CLUBHOUSE PHONE NO: 43 4555

GEELONG OBEDIENCE DOG CLUB INC.
NEWSLETTER NO. 67



Happy Christmas



*There's Christmas magic
in the air*

Welcome to our new members. May your stay with us be a long and happy one that enables you to promote responsible dog ownership wherever your path leads you.

This Newsletter is produced bi-monthly and distributed on the last training day of that month. (However, the next issue will be distributed on the first training day in February.) If you are unable to attend on that date please contact the Secretary and she will retain a copy for you to collect at some future date.

It seems life is never without incident if you are a member of our Club. Each year the elements do their darndest to make the life of our Trial Secretaries very trying and this time they won! None of our years are without flooding which is par for the course when we are in such close proximity to the river. At times we feel the brunt of the waters coming down the creek, but the majority of the heavy artillery comes across from the river, and this time it really raged, the highest level for 43 years!

Before we start feeling miserable at the cleanup and the restoration of equipment, we must take a broader outlook and express our sympathy to those members whose homes may have suffered through these wide-spread flood waters, and we must also thank those members amongst us who belong to organisations like the State Emergency Service (there are a number of our club members involved now) and the Fire Brigades whose unrelentless work in these trying times is what helps to raise community spirits. Living in Ocean Grove and having been involved with the S.E.S. for many years the many hands and man hours needed to keep the bridge and levee bank intact couldn't be accurately tallied. I know first hand what the levee was like because I was sandbagging there for an entire night with S.E.S. and fire crews from Werribee and the next day saw my 83 year old father helping to fill sandbags to keep the bridge piers supported together with crews from Melbourne. People all together with differing occupations and interests, but with the one goal in sight to be of as much assistance as they could muster.

Now, to our own problem of restoration out of the flood waters, surely as **ALL** members share the one interest, i.e. dogs, then all of you not involved in general flood salvage operations should help in some way.

MANY hands did in fact help to remove as much as they could salvage from the clubhouse, store shed etc. when the warnings were issued and to the members who responded then, heartfelt thanks from all of us. To the newer members, I reiterate what I've said in earlier years, if you hear through the media that the clubhouse or grounds are under threat and you live in the area, please offer your assistance (contact

Cont...

EDITORIAL CONT./2

a committee member) especially if you are at home throughout the day. When obviously help is not so readily available. Sizeable vehicles to move equipment and contents are always of great value, and we were fortunate indeed that this time we had the services of a bus belonging to club members. Other requirements, for your own protection, are rubber boots as in rising flood waters debris and poisonous snakes can be encountered.

Welcome to our new Committee for the 1995/96 year. You've certainly started out in one of the more trying periods of the year (or one could say, you've really come in at the deep end), if you weather this storm the rest of your term should be a piece of cake!

Due to the flooding our book work has been stored at various members homes, so the Certificate Passes from the last Promotion day are not currently to hand. So please bear with us and your achievements **WILL** be written up for our next publication.

The **DOG WALK** proved to be an overwhelming success and participation far exceeded expectations. (Thank you letter appears elsewhere in the Newsletter.)

DATES TO REMEMBER:

DECEMBER 3 Cut off date for Trial Results, Title Medallion requests, Elsa Dahl and Committee/Instructor person of the year nominations. There will be no Promotion Day due to flooding and restoration works and this will now be held on -

DECEMBER 10 - Promotion Day.

DECEMBER 05 - General Meeting, at which time we will have full damage and loss reports.

DECEMBER 17 - Last training session for 1995 and Presentation and family day. This is the day to have some fun in your class as the Instructors usually devise different activities for you and your dog to participate in.

Bring along some food to toss on the barbecue and have a convivial drink with friends.

JANUARY 28 - First day of 1996 training and puppy intake for those under six months.

Snakes are out and about once more and club members have reported sightings of them (prior to the floods) in a variety of places. As you have probably seen in some areas signs which read "Land for Wildlife", my boss is one of those providers, and he got more wildlife than he bargained for with a copperhead snake inside the house. Snake obviously needed correspondence lessons!

Should your dog be bitten, ring your veterinarian immediately and in the meantime administer treatment as you would for humans. If you walk or run your dogs in bush or rural areas it has been suggested that you carry a small phial of Calcium C (preferably in powder form) which can be administered directly to the dog if they are bitten, this does help to open the airways before further treatment is sought. Inexpensive safeguard and obviously no burden for the owner to carry.

In closing may I take this opportunity to wish you all a Happy Christmas and a prosperous new year and remind those members who are in the lower classes to still keep up with your homework over the

Cont...



EDITORIAL/3

break. Don't however, do this in the heat of the day, make your training sessions early in the morning or early evening. Don't forget to include your best mate in your Christmas festivities, and we look forward to seeing you all back in 1996 for recommencement of formal training on **JANUARY 28**.

Last but not least, don't forget you can buy that special friend of yours a present from the Club shop for Christmas. The shop has a full range of functional goodies and also those rewards we like to share on special occasions.

Special thanks to all those who contributed to getting this issue of the Newsletter to you, under somewhat trying circumstances.

EL

TRIAL SECRETARY'S REPORT

When I took on the position of Trial Secretary it was with some reservation as I only had limited knowledge of what the position entailed, so I read a lot and asked many questions of more experienced people and proceeded to plan our November Trial.

With a lot of help everything was well underway, entries (although low in number) were sorted and filed, the catalogue photocopied and the band of willing workers at our one and only working bee had the Agility equipment updated and painted ready for the day. Then the one thing beyond our control happened, Motor Nature stepped in and in just a few hours it all became "the Trial that never was" and I added "how to unorganise a Trial" to my list of experiences. My thanks go to all those who helped in the Trial preparation. I know many shared my disappointment at having to cancel, but the Club had a much greater problem to deal with - inches of very smelly, sticky slime and hours of hard work.

I'm sure thanks have been offered in other parts of this Newsletter to every Club member who pulled on gumboots and old clothes and I would like to add mine. When I first arrived at the Club early on the Saturday morning and saw for the first time the mess the floods had left behind all thoughts of the Trial soon vanished, and it was on with the working bee to end all working bees. Throughout that day and the Sunday that followed, there was a constant call for hot water, buckets, clean rags and scrubbing brushes and with brief stops for hot coffee and quick lunches, the Clubhouse and all its gear began to look reasonable again. Thanks here must go to Lorraine and Malcolm for organising lunch on both days and to all the other members who provided cakes, scones and biscuits when a cuppa was needed.

I know it's a weekend & I won't forget in a hurry and both Leonie and I decided that the next record flood should be when we are both very old ladies (me, very, very old) living in Grace McKellar saying, "I remember the flood of 95". But even then, I wouldn't wish this on anyone.

So I look forward to 1996 with successful Trials, plenty of fine weather and in general being involved with a group of hard-working people who work for the good of the Club as a whole above all else.

PAM CONVERY



PRESIDENT'S REPORT

Hello members!

The year ended with turmoil. The highest flood since 43 years hit us on very short notice. It forced us to cancel our Trial. This is only the second time in the 41 year club history, I believe.

I ask all of you to rally around to bring all our equipment up to scratch again. Many thanks to all the helpers who waded through the flood waters to rescue a lot of equipment, photographs, club records, books and so on. We are situated on a flood plain, so we have to put up with the inconvenience, but many hands shall make light work. The water came higher than first notified, so we might have lost some of our gear which was packed under the ceiling.

At the time of writing, we don't know if any structural damage was done to the club house etc., but still the Committee will endeavour to finish off the year with a friendly family day on December 17.

Our new Trial Secretary Pam had a bad start with the cancelled trial, but she took, and controlled the cancellation work well with a few helpers; well done you lot!

Now I wish you all a Merry Christmas and good training.

FRED LEHRMANN
PRESIDENT



EDITORS NOTE:

The President has had a full week with the flood servicing the many needs of our club as well as assisting at Jirrahlinga Wildlife Sanctuary which would have been one of the first properties to go under had the levee not been held. To complete his week he slept in his vehicle at the club grounds on the Saturday night in order to afford some sort of security to our dirty furniture and equipment removed from the clubhouse awaiting shampooing and re-installation. At that point of time electricity and telecommunications had not been restored. Good one Fred!

Canine Trivia:

Thanks to the success of an arthritis treatment for pets, humans will also be able to reap the benefits in years to come. Cartrophen Vet which has produced stunning results when injected into arthritic dogs, horses, and less frequently cats, is being adapted for human use after clinical tests showed the drug also had an 80% success rate with people.

(Reprinted from Pedigree PAL Digest, with permission.)



Leberfell Montana C.D.X.



Lacy

On the 10th of September 1995 Lacy and I finally broke through the CDX barrier, our very special thanks goes to **Jenny Bradbury** for all her infinite patience and never flagging encouragement, many many thanks Jenny for all those Sunday mornings. People say that the 3Ps are the magic ingredient for success in dog training; patience, praise and persistence, well Lacy and I can categorically state that **JENNY BRADBURY** is a master at the 3Ps in dog and handler training. Thanks again Jenny.

Our thanks must also go to our fellow trainees (Open & UD) for without their participation in the group exercises it would be near on impossible to train for these exercises.

Also a big thankyou to all the lovely people and their four legged mates who sent us congratulation cards, it was a real thrill to receive so many.

Lacy CDX and Angie Bloomer

PLENTY TO WAG ABOUT

On behalf of the Geelong Animal Welfare Society I wish to express our appreciation to the organisers of the successful Dog Walk held on October 15 at Queens Park.

The co-ordinator, Dr Ulrike Wurth, Highton Veterinary Clinic, Dr Sally Adams and Ms Pauline Naudi, North Geelong Veterinary Clinic, Dr N. Howard, Torquay Veterinary Clinic, Dr J. Hole, Grovedale Veterinary Clinic assisted by Mrs Lisa Blackwell of the Geelong Obedience Dog Club and Mr David Cecil worked tirelessly for many months planning the event.

We wish to thank the State Emergency Service, local veterinarians and staff, the generous sponsors and the large band of volunteers who assisted on the day.

Eight hundred and eight people walked with 600 dogs. We thank the animal lovers of Geelong and district for their support. The grand total of \$7,500 was donated to the Geelong Animal Welfare Society which was an increase of \$4000 over 1994.

Mrs Elva Reeves
President
Geelong Animal Welfare Society

(Reprinted from The Independent newspaper.)



-,-

SECRETARY'S REPORT TO ANNUAL GENERAL MEETING, OCTOBER 3, 1995

Firstly, I would like to begin my report with the usual breakdown of memberships, etc. Single memberships for 1994/95 are: 177 with 35 of those being pensioner singles, and 7 being junior memberships. There were 148 family, 16 dual, and 16 pensioner/dual memberships. To date this year we are on track to an increase over 1994/95. A notable comment regarding our junior members, as this area seems to be increasing. Where possible, I have encouraged the parents to also join, as in many cases, although through only good intentions, the children are not capable of holding the size of dog they have, or are too young to co-ordinate themselves to effectively train the dog and get some results. I believe there is a need to form some sort of policy on our junior handlers before an accident happens. Of course there is always the exception, where in some cases a child runs rings around many of the adults in the class, but this is usually where the right size dog, and right temperament has been selected with the child in mind. I do not believe that in most cases, a six or seven year old has the capabilities of co-ordinating or the strength of body or mind to train and effectively control a Labrador Retriever, let alone a German Shepherd or Rottweiler. It is something to think about.

I can not say that this year has been particularly busy with special events or functions, as the Committee has been hard pushed to get the basics done, due to the workload of such a large club. Being on a Committee is not about wearing a badge and prestige, but hard yakka, sometimes with little thanks or consideration from the General members, but after all we're there because WE volunteered. Like many members, I too have been concerned about the lack of social activities the club has had this year, but there has also been a lack of enthusiasm for them too, and like myself, some of the organisers have been disheartened with the lack of support from you, the general membership, after so much hard work. As a suggestion, next year I believe we should look at getting the membership back interested in the Club, and back into the clubhouse. By this I mean, disband the clicks, have regular sausage sizzles **ON THE VERANDAH, BETWEEN THE TWO SESSIONS**. By having inexpensive social functions while the members are already here, then it would serve two purposes, "promote the club to the membership already here", and get the social comraderie back in the club.

The Club information pamphlets I sent out to all the Vets, G.A.W.S., and other related businesses have worked well this year and with set intake dates, in most cases have seen a smoother membership intake. I believe it has given the Club a more professional approach, as these pamphlets are given to prospective members when they come down to the Club.

General Meetings have been well attended this year, but I think this is due to the vast array of guest speakers organised this year. I know I've certainly enjoyed them. It has amazed me this year however, the amount of people who look around the room to see how everyone else is voting, and then later complain that they didn't understand what the issue was really about. If this is the case, abstain your vote, or have the intestinal fortitude to stand up for your convictions and not run with the foxes and play with the hounds.

The V.C.A. Presidents and Secretaries Conference was a great disappointment to me this year, as it is apparent that the Agenda items that the delegates vote in favour of, don't actually find their way to the V.C.A. Management Committee for discussion. They are filed away, never to be heard of again. Unfortunately, they didn't count on



SECRETARY'S ANNUAL REPORT/2

the delegates feeling so passionate about the V.C.A. membership rule for committee members, and I believe our point was and is still being put to the Management Committee by Mrs Jane Harvey - a real crusader. Something will need to be done by the Affiliates this year to boost the Obedience fraternity's stature in the V.C.A. We are not just the workhorse of the dog world, but a community service and the V.C.A. must respond thus.

I would like to reiterate "Faithfully Yours" editorial from Issue 66. It is becoming increasingly obvious that our message is not getting across to some members. This year I made membership renewal easier than ever before by providing a renewal form in the Newsletter and also by taking memberships by mail, and still yet, renewals were late. I don't dictate the rules. The Constitution does. Late membership **CAN NOT BE ACCEPTED**. But by gee, some of the excuses were good. Members please be accountable for yourself and your dog. Read the Newsletter, listen to the announcement sheets and look at the noticeboard. We do it for you to be informed, not because we have nothing better to do. While on the subject of the Rules etc., when followed, the Club runs much smoother and they are there for all. By following the chain of command etc. everyone knows what is happening within the Club, and everything runs smoothly and everyone is happy. To the select few who seem hell bent on doing things their own way without consulting just bear in mind that **YOU** are disrupting the efficiency of the running of the Club and letting the team down. If you don't or can't play by the rules set by the members, then don't play.

In closing, I would like to say a big Thank-You to everyone, who has contributed to the running of the Club, and in particular those who have helped me with my book work, when my time has been stretched. We need to invent a 30 hour day so I can fit everything in! I wish my successor well and the Club the very best.

Yours sincerely,

LISA BLACKWELL
SECRETARY



LIFE FOR DOGS WITH HIP DYSPLASIA - "Out of the Internet"

First of all, be sure that your dog has been accurately diagnosed with HD. Many vets do not have the expertise in reading the x-rays, so you need to be sure than an experienced radiologist reads them. If you're not familiar with the competencies of the vets in your area, your best bet is to have the x-rays sent in to OFA for evaluation. You **CANNOT DEFINITELY DIAGNOSE HD** on the basis of external appearance or palpitation of the joint or anything like that. Many things can cause limping, some of which are correctable, so it pays to be certain you have the correct diagnosis.

Diagnosis of Hip Dysplasia is not an automatic death sentence for your dog! Because it is a polygenetic trait, the variability of expression is actually quite wide. Some dogs may experience little or no discomfort and you may never know they have **HD unless you test for it**. Other dogs may experience more pain, but it may be easily controlled with proper exercise and judicious use of aspirin under the direction of a vet. Only a small percentage of cases are so crippled by HD that they must be put down.

You should immediately neuter any dog that has **HD**. The only known means of eliminating this disease lies in well-managed breeding programs, so do your part by eliminating the possibility of your dog contributing to the overall problem.

Discuss with your Vet appropriate strategies for dealing with **HD**. In most cases, the general advice is to keep the dog from doing any kind

LIFE FOR DOGS WITH HIP DYSPLASIA/2

of jumping or causing other sudden stress to the joints. However, as solid muscle buildup around the joint helps to ease the pressure on the joint, regular exercise is generally recommended, with swimming topping the list as gaining the most benefit with the least stress to the joints.

PRESIDENT'S REPORT TO ANNUAL GENERAL MEETING, OCTOBER 4, 1995

Dear Members!

After a tumultuous start of the Year 94/95 celebrating our 40th Anniversary together with our November trial which both drew heavily on all our resources, both human and finance, we went into a well earned summer recess, with our last training session and family BBQ day on December 11, 1994 on which also all Club awards were presented. It was a proud day for me as I was presented with the Instructor/Committee person of the Year award. I still feel that I am only the caretaker of this for a very dedicated team that helped during 1994.

Since restarting with the February Committee meeting we had a quiet year. The activities concentrated on the training mainly. We also were host to the Werribee Club for the "Spirit of the West" Challenge which we duly won. July 16 was the day of our mid year trial and it was great to see the tremendous involvement by a lot of our members. The working bees were well attended and a lot of volunteers on the day in all departments, as well as over 30 Geelong entries proved that we were doing something right.

Due to several Guest Speakers organized by the Secretary, the bi-monthly General Meetings were well attended. Unfortunately our social activities were neglected, which we will try and rectify in the coming year, possibly starting once again with a New Years Eve party.

On the Plus side we saw about half a dozen new instructors pass their exams, making it easier for the Training Supervisor to organise the classes. There has been a steady stream of new members and to the Supervisor's credit he has managed the intake well.

We also had quite good results on the trial scene with a good number of titles and some very close. The general atmosphere has been relatively pleasant, but I feel that the Club needs a shot in the arm with some new members on the committee etc. Unfortunately we were not over-run with nominations. This means, with some exceptions, the burden shall be carried once again by the same people! One may view this as an endorsement of their work done and we hope that their efforts will be supported in the future. It is important that new members take an interest in the Club in more ways than just spending an hour training. I appeal namely to the younger ones to carry on the good work done by so many over the years. May I say "Thank You" to the outgoing committee for the effort you put in. I know you did this all to the best of your ability and to the extent as circumstances allowed you to, but at least you had a go. During the year we lost Bert Bartels from Committee due to work commitments but we also gained Pam Convery.

The individual departments will give their reports so I won't dwell on this. But I must say that once again my job as President was made easy (most of the time) through the thorough and efficient way the Secretary had the office under control and the Club calendar

Cont...



PRESIDENTS ANNUAL REPORT/2

organised well ahead. Well done Lisa! Once again Lisa is looking for a break and we haven't found a replacement. She will be a tremendous loss and hard to replace. So let's hope! To Meinhard Breiberg, David Blackwell and Michael Foord who are also not standing again "thank you" and good luck in the future.

For myself, I must admit that I was in two minds before accepting nomination, but having done so and no other submitted, I shall try and fill the position of President once again to the best of my ability. Surely there must be some amongst you more qualified than me so let's hear from you. Until then, or when my steam runs out I'll remain.

Yours sincerely,

FRED LEHRMANN
PRESIDENT



. The name terrier comes from the Latin *terra* (meaning land) because these dogs go to ground chasing rabbits and other small burrowing animals.

. Champion greyhounds can run at speeds in excess of 60km per hour.

. . An Australian cattle dog named Bluey lived for more than 29 years, a world record.

ADVERTISING RATES AS FROM MARCH 1993:

All advertisements will be restricted to Half A4 Page size, with a limit of 12 advertisements per issue.

12 months	\$75.00
6 months	\$50.00
1 edition	\$25.00

Half page "Vale Notices" and "Title Notices" are free with the owner supplying the print.

Advertising copy is accepted at the discretion of the President and Secretary of the Club.

W E L C O M E T O O U R N E W M E M B E R S :

Sandra O'Hara	Katrina & Grant Hore	Megan Crawford/Geoff Hein
Marion Bates	John Cohsedine	Danielle Stephens
Robbie Coverdale	Justin & Railene Reid	Paul Jackson
Susan Barrett/ James Dunlop	Rick & Leanne Hambrook/Kris Harris	
Rick Lear	The Bartels Family	Flynn Hyslop
Ted & Patricia Szicuta	Pedro & Tali Silva	
The Jarvis Family	Peter Lethbridge	Michael Cox
The Shaw Family	Peter & Jill Blair	Rowena Lee
Fiona Fitzpatrick	Georgina Smith	Libby Booley
Karen & Anthony Francis	Justine Birchall/Tony Vulcan	
Robybn Shakespeare	The O'Neill Family	Ben McMahon
Russell Ettery	Catherine Cross	Jeanie Gamble
Jean & Peter Came	The Dridan Family	Richard Coutts
Ron & Deborah Gilmour	The Pettman Family	
June & Max Ettery	The Foster Family	Alys Jacobs
Brenda & Richard Duhrmann	Amy & June Dowler	
Brian & Jarryd Dodds	The Simpson Family	
Judith Wuttrell	Richard Parke/Jodie Long	
The Konieczka Family	Vikki Little/Jamie Edward	
Rhonda Hewitt/Wayne Oliver	David Guthrie/Margot Read	
Les & Agnes Baensch	Jeff & Ruth Armstrong	
Daryl & Jeanette Appleton.		

Could the following members please see the office, as details have been missed on your applications for memberhsip.

- Nicole Miller & Zak	Erin Pettigrove & Mulray
Marianne Sander & Babette	Jody Russell & Billy
Fiona & Ken Caldow & Toby	Cheryl Varker & Barry
Tillie Anglis & Velvet	Penny Rob
Peter & Karen Wood & Oskar & Bonny	Roger Maloney & Mark
Philip & Helen Mair & Shadow & Feeby	
Billy Lynch & Max	Jan Speirs & Harry
Damian Van Den Brand & Budda	William Heywood & Rex
Rhonda Hewitt/Wayne Oliver & Connie	
David Guthrie/Margot Read & Star.	

T R I A L L E R S :-

Have you put your title requests in, so you are eligible for the end of year title medallions?

Have you put your trial results in for the end of the year "Top Dog" awards?

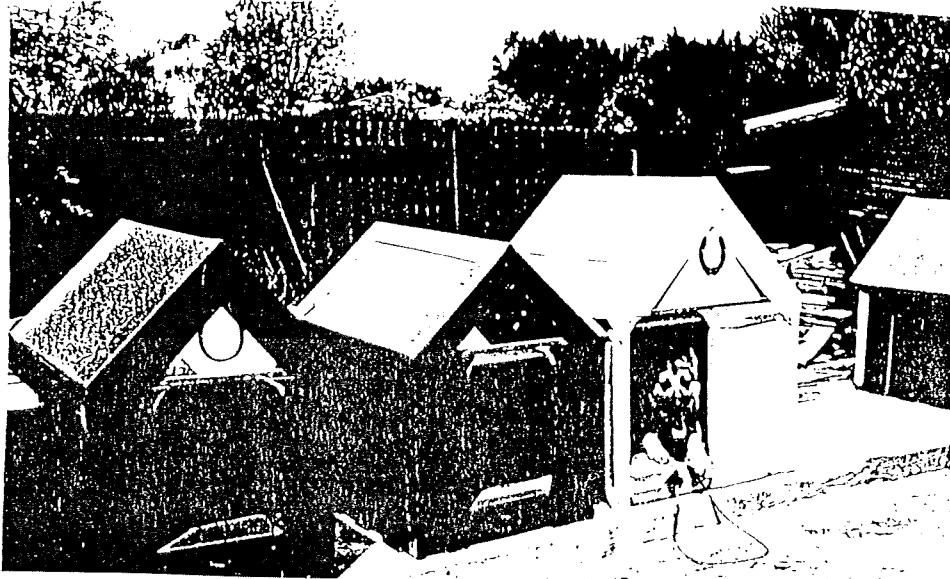
Have you put your dog's photo on the wall after you've got your title?

If not, time runs out on the 3rd December, 1995. HAND IT IN TO THE SECRETARY P L E A S E.

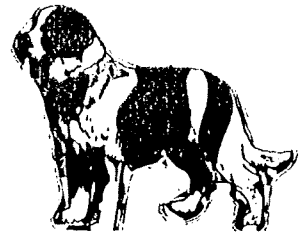
Thank-You
Lisa Blackwell
SECRETARY



⁻¹²⁻
PRIVATE OBEDIENCE TRAINING
CHARLIE BARTOLO Phone: 41 8153



ANY BREED
24 YEARS
EXPERIENCE



INSPECT OUR RANGE.
ENQUIRIES: Phone - 41 8153 ANY AGE



TOTAL PET CARE

- ALL VETERINARY SERVICES
- VETERINARY ACUPUNCTURE
- GROOMING AND HYDROBATH

Veterinary Surgeons: **Dr Ulrike Wurth, B.V.Sc. Dip. Ac.**
Dr. Rodney Collins, B.V.Sc.

Tel: 43 0077 24 Hours
88 Barrabool Road., HIGHTON

DISPLAY TEAM REPORT

This is my last report for the year and I'm running late, so thanks Editor for the extra time to get it done!

Mid-October saw a full contingent of team members attend Vines Road Primary School fete to "**strut their stuff**" to a large and appreciative audience. The team aired several new variations to their routine and did really well - the hard work **does** pay off gang!

A couple of weeks after, five of us and our dogs (of course) returned to the Old Folks Hostel in Lara for a small obedience "**demo**" and visit to our senior residents - a very pleasant outing as always and we have been invited to return again in early February.

Our last outing - at least for this report was the Annual Gala Parade with some 38 other club members and their dogs.

The official organization of the event this year was appalling - everyone was forced to wait for a very long, boring time before the parade got under way and then our dogs had to cope with S.E.S. sirens blaring non-stop right behind them for most of the walk. However, per usual, they behaved impeccably and the display team showed the crowd their good training as we led our group through the city streets.

To everyone who helped and walked a big **THANK YOU** you all did a **FANTASTIC JOB** and it is appreciated.

To the Display Team and our tiny band of helpers who always lend support and help calm the nerves before we go out, thank you all - have a great holiday break and I'll see you for more hard work in the New Year.

DESMA DICKESON
MANAGER



HATCHES

Congratulations to Susan and Duncan Major on the birth of a son, **Aztec Fergus** on October 17.

TITBITS

When you know the collector shaking the Animal Welfare tin you tend to unladen yourself just to give. One such incident recently gave the Association more than just money. The donor downloaded two armfuls of business shopping to get to purse and left an extra donation of their hot lunch straight from the Supermarket. some of us give our all!

The three minute down stay found one of our trialling Dobermanns with her nose perpendicular to the sky (obviously watched too many re-runs of "Fantasy Island") and she seemed to be saying "Look mum, the plane, the plane!" She lives to chase birds, but this time she might have bitten off far more than she could chew! Even gundogs aren't that ambitious!

Which Instructor forgot they had a dinner engagement on October 6 and had to be rung from the restaurant because of their non attendance?

Which Instructor kept her own glass under control, but managed to knock over another guests' on the way out? You just can't take some people anywhere can you!

Cont...



TITBITS Cont/2

Boots are no help when the hose dribbles down your leg are they Chery1? Nothing worse than soggie sockies. (Become involved in tracking and you'll find it is par for the course!)

Elaine

TRIAL RESULTS - TRIAL RESULTS - TRIAL RESULTS - TRIAL RESULTS

No submissions! SHAME, LIFT YOUR GAME TRIALLERS!

NEWS FROM THE "INTERNET"

DRUG SNIFFING

Snag, a US Customs Labrador retriever trained and partnered by Jeff Weitzmann, initiated the discovery of a 4.2 ton haul of cocaine hidden in a tanker in San Diego, CA in October 1990. Adopted as a stray in 1988 and trained at the US Customs Detector Dog Academy, to date Snag has made 118 drug seizures worth a canine record of \$810 million.

The greatest number of seizures by dogs is 969 (worth \$182 million) in 1988 alone by Rocky and Barco, a pair of malinois patrolling the Rio Grande Valley ("Cocaine Valley") along the Texas border, where the pair were so proficient that Mexican drug smugglers put a \$30,000 price on their heads. The dogs hold the rank of Honorary Sergeant Major and always wear their stripes on duty. (Editors note: Malinoise are a type of Belgian Shepherd.)

HIGHEST JUMP

The canine "high jump" record for a leap and a scramble over a smooth wooden wall (without ribs or other aids) is held by a German Shepherd dog name **Volse**, who scaled 11ft 9 ins at a demonstration in Avignon, France in November 1989. The dog is owned by Phillipe Clement of Aix-en-Provence, France.

Duke, a three year old German Shepherd Dog, handled by Cpl Graham Urry of the Royal Air Base at Newton, Great Britain, scaled a ribbed wall with regulation shallow slats to a height of 11ft 9 ins on the British Broadcasting Corporation Record Breakers TV program on November 11, 1986.

LARGEST

The heaviest breeds of domestic dogs (*Canis familiaris*) are the Old English mastiff and the St Bernard, with adult males of both species regularly weighing 170-200 lb. The heaviest (and longest) dog ever recorded is **Aicama Zorba** of La-Susa (whelped 26 Sep 1981), an Old English Mastiff owned by Chris Eraclides of London, Great Britain. **Zorba** stands 37 inches at the shoulder and weighed 343 lb in November 1989. Other statistics include a chest girth of 58¾ in, a length of 8ft 3½ ins and a neck measurement of 37½ ins.

Cont...



NEWS FROM THE "INTERNET"/2

LONGEST JUMP

A greyhound named **Bang** jumped 30 ft (nine metres) while chasing a hare at Brecon Lodge, Gloucestershire, Great Britain in 1849. He cleared a 4ft6in gate and landed on a hard road, damaging his pastern bone.

MOST VALUABLE

The largest legacy willed to a dog was by Miss Ella Wendel of New York, who bequeathed her standard poodle **Toby**. \$75 million in 1931.

OLDEST

Most dogs live between 8 and 15 years, and authentic records of dogs living over 20 years are rare. They are generally the smaller breeds. The greatest reliable age recorded for a dog is 29 years 5 months for an Australian cattle-dog named **Bluey**, owned by Les Hall of Rochester, Victoria, Australia. The dog was obtained as a puppy in 1910 and worked among cattle and sheep for nearly 20 years. He was put to sleep on November 14, 1939.

MOST PROLIFIC

The greatest sire ever was the champion greyhound **Low Pressure**, nicknamed **Timmy** (whelped September 1957) owned by Bruna Amhurst of London, Great Britain. From December 1961 until his death on November 27, 1969 he fathered 2,414 registered puppies, with at least 600 others unregistered.

The largest litter of pups on record is 23, from an American Foxhound.

SMALLEST

Miniature versions of the Yorkshire terrier, the Chihuahua and the Toy Poodle have been known to weigh less than 16 oz as adults.

The smallest mature dog on record was a matchbox-sized Yorkshire Terrier owned by Arthur Marples of Blackburn, Great Britain, a former editor of *Our Dogs*. This tiny atom, which died in 1945 at the age of nearly two years, stood 2½ inches at the shoulder and measured 3¾ inches from the tip of its nose to the root of its tail. Its weight was just 4 oz.

The smallest living adult dog is a Yorkshire Terrier named **Summer-Ann Thumberlina**, 8 inches long and weighting 20 oz. Born on January 5, 1992, she is owned by Maureen Howes of Stourport-on-Severn, Great Britain.

TALLEST

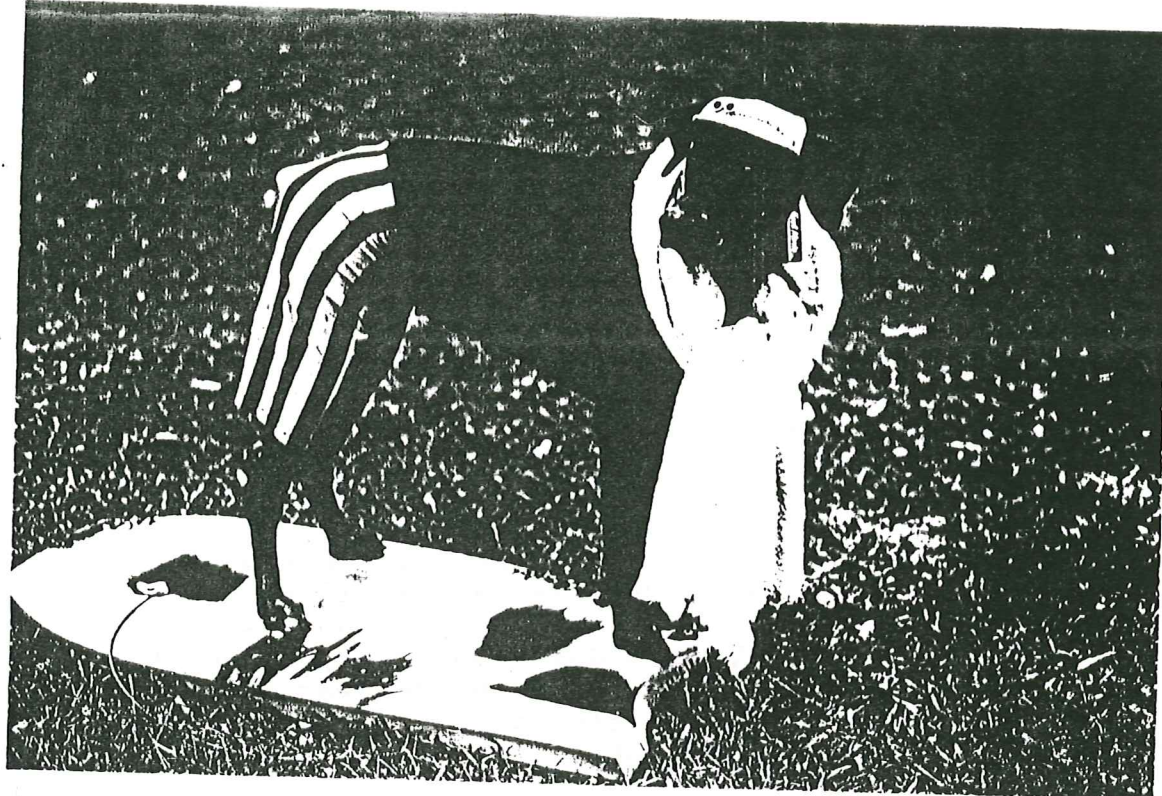
The Great Dane and the Irish Wolfhound can exceed 39 ins at the shoulder. The tallest dog ever recorded was **Shamgret Danzas** (whelped 1975), owned by Wendy and Keith Comley of Milton Keynes, Great Britain. He stood 41½ ins, or 42 ins when his hackles were raised, and weighed up to 238 lb. He died on October 16, 1984.

BEST TRACKER

In 1925 a Dobermann named **Sauer**, trained by Detective-Sergeant Herbert Kruger, tracked a stock thief 100 miles across the Great Karroo, South Africa by scent alone!

(From the Guinness Book of Records, 1993.)





THE
PET
SHOW

On a wet September day at the Geelong Showgrounds an enterprising Geelong College Year 10 Commerce student known as Lizzie ran "The Pet Show" in aid of the Geelong Animal Welfare Society.

The program opened with a display by our own Club team, who in the limited space and an indoor venue, gave a creditable performance. (My apologies for the lack of photos but my camera digested the entire film on the day.)

This was then followed with the Novelty classes. Our members put in a good appearance and those with placings were as follows:

<u>BEST GROOMED PET:</u>	Barbara Thorogood & Gemma <u>4th Place</u>
<u>PET MOST LIKE ITS OWNER:</u>	Elaine Longshaw & Tshintia <u>2nd Place</u>
<u>BEST EDUCATED PET:</u>	Bill Laing & Marcus <u>1st Place</u>
<u>COOLEST PET:</u>	Elaine Longshaw & Tshintia <u>1st Place</u>
<u>SAFEST PET:</u>	John Bell & Bessie <u>1st Place</u>
<u>GOOD.O. EATING COMPETITION:</u>	Elaine Longshaw & Tshintia <u>4th Place</u>
(The quantity to be devoured by each dog was humungous, and the first three placings went to LABRADORS.)	
<u>OBSTACLE COURSE:</u>	John Bell & Bessie <u>1st Place</u>

INTERNET HELP

COMMON HANDLER ERRORS

More can be found in Barbara Handler's book! Fraser & Ammen's book list a number of them too. These suggestions are primarily for AKC's obedience exercises, although they are widely applicable. Exercises that are specifically different in other organizations are not covered. (Suggestions from a number of people, especially Nancy Gagliardi Little; collected by Ruth Ginzberg)

RECALL

Common handler errors:



1. Bowing when giving command.
2. Improper hand position.
3. Body english for the finish (dipping shoulder, moving feet etc).
4. Head movement.
5. Moving fingers on the finish.
6. Moving arm position after voice command to finish is given.
7. Overly loud command.
8. Double commanding (signal and voice) for finish is given.
9. Giving the "Stay" command out of heel position (as or after handler steps out).

Helpful hints:

1. Don't leave your dog on the crack of the mat or a high or low spot if showing outdoors.
2. After leaving the dog and going to the other side, don't look up at the judge until you have positioned yourself and are ready for the command.
3. Ensure that there is enough room behind you for the finish.
4. Position yourself across the ring so that the dog will not have to sit on the crack of the mat.
5. Use the same tone of voice that is normally given for the recall command (many handlers will change the tone of their voice when they are nervous and the dog doesn't understand).
6. Leave your dog by stepping out on your right foot (or which ever foot you normally leave on).
7. Make sure you have your dogs full attention before leaving him so he doesn't get up as you leave.
8. Make sure your command is loud enough, if there is lots of noise (i.e. PA system on and off, etc).

LONG SIT/DOWN

Common handlers errors:

1. Not knowing that if dog breaks the owner SHOULD NOT return to the line with other competitors.
2. Late leaving dog.
3. Not returning to the heel position.
4. Positioning the dog or touching the collar (you can't touch them).
5. Handler zeros in previous exercises and doesn't return for Sits and Downs (you must return or ask the judge to be excused).

Cont.

6. Extra signals from across the ring.

Helpful hints:

1. Don't position your dog on the crack of the mat or (if outdoors) a high or low spot.
2. Look around before getting started and pick up any debris near your dog to avoid sniffing.
3. Clip your armband to your leash - and lay down so it won't get knocked or blown away.
4. Make sure that your dog will lay down straight (especially if you are showing a large dog), to avoid having to reposition your dog.
5. When the judge asks if everyone is ready before the exercise starts SPEAK UP, if you aren't ready - don't rush yourself and chance a zero.
6. Cross your arms to make the exercise look different than the recall.
7. If your dog doesn't go down on the first command, give another - the exercise doesn't start until the handlers leave (except for rough handling, etc).
8. Make sure you have your dogs full attention before leaving him so he doesn't get up as you leave.

HEEL ON LEAD

Common handler errors:

1. Tight lead (to see points for lagging AND tight lead). This could also cause a zero for the exercise, if the judge feels that s/he was not given an opportunity to see the dog work on leash.
2. Adapting speed to dog (especially not walking briskly).
3. Not changing speed.
4. Lead corrections.
5. Not heeling so DOG IS ON MAT.
6. Stepping into dog on sit.
7. Too many steps on the halt.
8. Anticipating judges commands (going back to normal after the fast before the judges command, turning early, etc).
9. Pausing or stopping on about turn (heels should never come together - the turn should be made in motion).
10. Rounding corners on the left turn to avoid crowding by the dog.
11. Checking each sit after the halts.
12. Extra body movement on the "Heel Command".
13. Moving the leash position after starting to heel.

Helpful hints:

1. Don't stop too quickly on the halts - many handlers panic when the judge commands and they stop on a dime.
2. When the judge asks if you are ready, LOOK at your dog first before you reply.
3. If the dog lags (i.e. on the figure 8) don't let out the lead, let it tighten up - the judge will take a lag only (the dog caused the tight leash).
4. Don't look back at the dog - it will only cause the dog to lag more.

Cont.



5. Many handlers forget to give the "Heel" command after each command to "Forward" by the judge.
6. If you have questions, before the exercise starts (about anything - since this is the first exercise) ask the judge.
7. Crossing the mat on the fast time. Crossing the mat is a problem that occurs when the handler doesn't walk or run in a straight line. Either the handler moves across the mat to the right (away from the dog).

FIGURE EIGHT

Common handler errors:

1. See Heel on Leash.
2. Slowing down when the dog is on the outside.

Helpful hints:

1. Make sure to give the dog enough room when executing the inside post. Many handlers cut too close and the dog is forced to drop back into a lag.
2. Give yourself enough room at the start of the exercise (especially for those with large dogs) so you can take at least two steps before going into the turn.
3. Unless you have a forging dog, always start the exercise by going to the left. If you go immediately to the right (dog is expected to get up from a sit and go into a fast), it starts the dog off into a lag.

HEEL FREE

Common handler errors:

1. See Above.
2. Hand position - a) Both hands down and "swinging" or b) Right hand down and swinging and the left hand held up at your waist. The hand position can change for the fast pace, but must immediately return to the previous position on the normal pace.
3. Changing hand position after starting.

Helpful hints:

1. Forgetting that it's permissible to issue a second command (point loss but no zero/NQ).
2. Ensure that you give the "Heel" command first before stepping out to avoid leaving the dog sitting behind.

STAND

Common handler errors:

1. Touching while giving "stay" command.
2. Backing away.
3. Going too far (must be about 6 feet away).
4. Not returning to heel position.
5. Giving the "Stay" command out of heel position.
6. Returning directly into heel position (not going behind the dog first).
7. Rough handling of the dog to position him.
8. Extra commands to stay - "Stay/Stay" or "Wait...Stay".
9. Waiting for the judge to tell the handler to leave.



Helpful Hints:

1. Pace out the 6 foot distance ahead of time (or go about to where the judge is - that's usually 6 feet).
2. After standing the dog, move to heel position and take one last look at the dog before giving the command to stay.
3. If the dog doesn't stand on the first command, physically stand the dog (don't use your feet).
4. Make sure you leave your dog on the foot that you normally leave him on (usually the right).
5. If the dog sits or moves from position after the judge has examined him and before you return, the dog has still qualified (lost major points, though).

GENERALLY COMMON HANDLER ERRORS:

1. Positioning the dog (knee, foot, hands) before exercises - you can't touch them at all to position them - even if the exercise is over.
2. Collar too loose or too tight (or illegal).
3. Handler not familiar with the rules (when handler fills out an entry form and signs it, s/he is stating that s/he has read the rules and is familiar with them.
4. Enter and Exit the ring on a loose leash (yes, you must clip the leash on your dog before exiting).
5. Telling the judge that they are ready for an exercise when the dog is not in position. Always check your dog before replying that you are ready.
6. Neither judges or stewards may reveal any part of your score until after the class is over. The judge must, however, tell you whether you have qualified after your sits and downs.

GENERALLY COMMON HELPFUL HINTS:

1. Make sure you praise your dog between exercises so they don't get stressed. This way you can also keep the dog's attention.
2. If you need to, you can gently guide your dog by the collar.
3. Teach the dog pivots, so that you can position the dog without repeatedly turning around and around.
4. Make sure your dog is clean (judges HATE to touch dirty dogs).
5. Tie your hair back (if it is long).
6. Make sure your clothes don't interfere with the dogs movement.
7. Have a pleasant expression on your face, otherwise the dog will react to the difference in your personality (who is this strange person I'm with?).
8. Give all command in the same tone of voice as when you train.
9. Think about your handling - try to forget about the dog. You should have confidence in him by now. If you worry about something (or dwell on something) it will probably come true. Try to keep a positive attitude.
10. Always check to see if there are missing dogs (or dogs with conflicts) ahead of you. Never go to the steward's table with your dog.
11. Keep your dog away from you until just before you show. Do a brief warmup, but not too much.
12. Make sure that your dog has been exercised and will not foul the ring.

Cont.



13. Arrive AT LEAST one hour before you show. Walk the dog through the whole show area, then put him away.
14. After the 1st sit and down group is complete, (if you have qualified), get your dog and warm them up for a run-off no matter how you feel about your performance.
15. Watch at least 2 or 3 dogs performance before you show (unless you are the first or second dog) and plan where you will position yourself. Watch carefully, where each exercise is done and what the judges commands are.
16. Don't take gum into the ring (some judges consider it food). Empty your pockets of extra change or keys.
17. Don't bring your dog up to the ring entrance until the judge is ready for you - especially don't bring him up while the other dog is exiting.
18. If you place, show good sportsmanship by congratulating the other placers.
19. After the class is over, approach the judge and ask her/him if s/he would be willing to go over your score. Most judges are more than willing to do this after all the paperwork is complete - but they are not required.
20. You might want to get a photograph done if you get a placement or a C.D. that day.
21. Always verify your score at the superintendent's table after the judge has turned in the book. Sometimes there are errors. If you placed, make sure that your number is in the correct place.
22. If you place first, you will need to wait around until another class finishes with a first place that is higher than your score (for the High in Trial award).
23. Check (in the catalogue) to see if you are eligible for any special prizes. (i.e. High Scoring Weimaraner etc). Check before the trial, as sometimes you need to sign up for a possible prize. Always check afterwards as well.
24. Always verify that your dog's name (and your address) is listed correctly in the catalogue (or on the entries that you receive in the mail).

(This article is written by a trialler in another country, but I am sure 90% is relevant to our situation and we can certainly gain some valuable tips. Thanks go to one of our members who is fortunate to have access to the wealth of information available through the Internet. We can only further our education by an exchange of knowledge.)

TRIVIA - The owner of a five week old puppy who could not afford to care for it posted the dog from Tunbridge Wells, in the south of England, to an animal refuge 13 km away. The pup miraculously survived at least one night in freezing temperatures in a mail sorting office, before staff at the animal shelter opened what they thought was a normal package - only to find the unconscious puppy inside. An unsigned note said merely, "I can't manage. Sorry." Fortunately, refuge staff were able to revive the hapless pup.

(From Canine Trivia, Pedigree Pal Digest reprinted with permission.)



OBEDIENCE CALENDAR

	<u>CLOSING</u>	<u>ACTUAL</u>
<u>VICTORIAN OBEDIENCE DOG CLUB</u>	12.11.95	3.12.95
<u>VICTORIAN CANINE ASSOCIATION</u>	20.11.95	9.12.95
<u>CROYDON & DISTRICT OBEDIENCE D.C.</u>	26.11.95	10.12.95
<u>ROTTWEILER CLUB OF VICTORIA</u>	1.12.95	17.12.95

CLUB CALENDAR



27.11.95	Instructors' Meeting
3.12.95	Puppies & Class 1 Intake Cut off date for Trial Results Title Medallion requests, Elsa Dahl & Committee/Instructor of the Year nominations.
5.12.95	General Meeting
10.12.95	Promotion Day
17.12.95	LAST Training Session for the year. Presentation day.
28. 1.96	Training RESUMES. Puppy Intake (under 6 months).

PLEASE NOTE: NEWSLETTER CLOSING DATE JANUARY 10, 1996, ON THE KNOCKER!

VET HAS NO BONES ABOUT BEST PET FOOD
by David Hill

The great dog food debate has raged for years. In one camp is a group of crusading vets advocating raw, meaty bones while the other is occupied by the processed pet food industry.

Veterinarians argue dogs fed exclusively on processed foods are unhealthy and have a shortened life expectancy.

Now NSW vet Dr Ian Billinghamurst has taken the argument to England where his book Give your Dog a Bone, is creating a stir.

English vets and dog breeders are proving to be as bitterly divided as Australians.

Manufacturers argue pets have never lived as well nor as long as they do since commercial foods have been freely available.

They assert that their products provide complete, disease-free and balanced nutrition.

In my opinion the most suitable and convenient way to feed dogs is with a mixture of dry and moist commercial foods. Add a raw, meaty bone every second day to ensure your dog gets adequate nutrients and its mouth is kept healthy.

(Dr David Hill is an East Bentleigh vet and a Herald Sun columnist.)

JUMP IN MY CAR
by Kath Williamson

It's always a joy to see a happy, well cared for dog enjoying a ride in the car. Dogs really relish going places and doing things with their owners. It is a shame to see a dog being forced, pushed and pulled to get into a vehicle when the animal is cringing, with fear and has no knowledge of what is happening. A little patience and common sense is required when introducing a dog to the idea of riding in a car. As the majority buy a pup when getting a new dog, I have written about introducing puppies to vehicles, but my comments apply equally to the older animal.

Firstly, the pup should be allowed to sniff and explore around the vehicle a few times, to get him used to the strong smell of petrol, grease and residual exhaust fumes. Do not have the motor running at this stage. Progress to lifting the pup into the car, sitting there with him for a few minutes, maybe with a ball or toy. At all times you should be speaking to him in a happy relaxed manner - if you sound happy and at ease, the pup will feel reassured. Encourage the pup to stay in the area of the car you want him to be in whilst travelling. No dog, especially a young pup, should ever be allowed to travel in the front of a car - the risks are far too great for driver, passengers, and dog.

LIFT the pup out of the car. Firstly, he is clumsy and awkward and is still too young to effectively gauge distances and the chance of injury is high if he jumps. Secondly, by lifting him out, **you** are deciding when he can leave the car, which will be of great importance later.

After he has accepted the idea of sitting in a car and staying in one area then try starting the motor after you have put the pup in the car. With station wagons and the like, always put your dog/s in the car prior to starting the motor -no-one likes a faceful of exhaust fumes, which is what your dog will get if you start the motor while he is waiting at the back of the vehicle for your command to hop in.

Don't drive anywhere for the first few times, just put puppy in the car, play some games and then start the motor. After a couple of times, your pup should be totally at ease and beginning to understand that he is not to leave the back seat or back of the wagon.

Next of course, is to start moving. Start with a trip to the end of the street, then call it a day. Repeat this over a week, gradually increasing the distance, and reassuring the pup with a happy encouraging voice. By the end of the first week, the puppy should be, while perhaps still a little apprehensive, accepting that trips in the car are a fact of life. Classical music, played at low volumes on the radio, can help calm animals that don't enjoy travelling.

Make him associate his first few trips with having a good time - go and visit a friend's dog, go to the park, or the beach, or go and visit some children. Try to avoid having his first big trip a stressful one, like going to the Vet's for an injection.

From the very first time you start to familiarize the pup with car, use commands such as "UP" OR "IN" when you want him in the vehicle, even if you are lifting him out. Another command this writer uses

Cont...



JUMP IN MY CAR

in a number of situations is "WAIT", and I use this when I open the car door, but do not want the dogs to get in or out immediately. Basically, I am telling the dogs to WAIT until invited to get IN or OUT.

Some dogs do get carsick. The best way to prevent this is to introduce the young dog to vehicles in the manner described.

Other helpful hints are:

- . do not feed, your pup a large meal within 12 hours of a long car trip;
- . discourage the dog from looking out the side windows - the rapid eye movements required to focus on the scenery rushing by can cause nausea;
- . try to get the dog to lick at an ice cube or drink a small amount of icy water prior to departure;
- . some people recommend feeding one or two junket tablets, but I have not tried this method and cannot be sure of its effectiveness.

These tips should also be useful for those dogs that travel in floats and trailers.

The most important thing to remember is that the dog should enjoy his car trips - it is upsetting for both you and your dog if you arrive at your destination with a distressed, anxious dog. If you take the time to slowly accustom your dog to car travel, you should find your dog will happily accompany you and 'jump in your car' whenever the opportunity arises.

(Reprinted with permission of

Top Dog Journal.)

ELSA DAHL AWARD

This award is made annually in memory of a Life Member of our Club. The award is made to a person who has contributed to/or achieved something within the Club over the year. It may be skills associated with owning and training dogs, or it may be for administrative and functional achievements over the year. A judging panel selects the winner from Applications submitted IN WRITING prior to that date. If you admire someone for something they have done, write their name down, together with your own, and a short paragraph setting out the reason why you have nominated them and hand this to the Secretary. This shouldn't necessarily be related to time spent at the Club, but rather to the achievement itself. (You will see on the feature wall in our Clubhouse this Award with the previous recipients names thereon.) Remember closing date is **December 3**.

COMMITTEE/INSTRUCTOR PERSON OF THE YEAR

This award is for someone who you feel has gone beyond the call of duty for the Club and its members throughout the year. If you admire a Committee person or Instructor, please nominate them. As above, write your nomination down and a short paragraph about them and sign it and submit it to the secretary. Closing date **December 3**.



MAKING TREATS -

Biscuits: 1 pound raw liver;
1 cup corn meal;
1 cup whole wheat flour;
tons of powdered garlic.

Puree the liver in the blender and mix the rest together into sticky gooey mess. spread onto well greased baking pan and bake at 300 degrees until it is fairly dried out, but not browned. If you want, you can poke the bubbles that form on the top to keep them from separating from the rest, but it works fine if you don't. Allow to cool and cut into ½ inch squares. Store in freezer, though a small bag, if used frequently can be kept in the fridge. Caution: it goes off really fast, so only keep small amounts unfrozen.

Biscuits: 1 lb liver (beef or pork)

1 C Corn meal
2 eggs
½ cup flour
2-3 tsps garlic powder
2 tblsps oil

Blend in food processor until smooth. Bake in greased 9 x 13 pan 20 minutes at 400 degrees. Cut into squares. Keep in frig. or can be frozen.



DID YOU HEAR?

"Two dogs met in the street one afternoon for their usual romp. Say, Terry, what's wrong with you?" asked the little poodle. "You look terrible today."

"I feel terrible," the terrier replied, "I'm on edge, I can't sleep, and I have no appetite."

"Then you should see a good vet."

"I've seen half a dozen already, and they all say I'm in fine shape."

"Maybe what you really need is a good psychiatrist."

"That's impossible," the terrier sighed, "I'm not allowed on couches."

(Reprinted from the "The Dog Lover's Reader" edited by Timothy T. Clarke.)

Recipe for Preserving Children

1 grass grown field
1 half dozen children (or more)
Several dogs (puppies if available)
1 creek
Pebbles

Into field pour children and dogs, allowing to mix well. Pour creek over pebbles till slightly frothy.

When children are nicely brown, then dry and serve with milk and fresh baked cookies.

Ends
ELAINE LONGSHAW

M E R R Y
C H R I S T M A S

