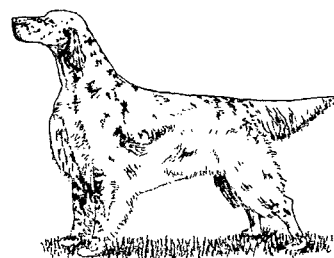
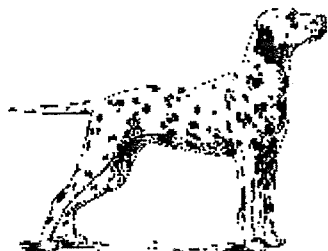
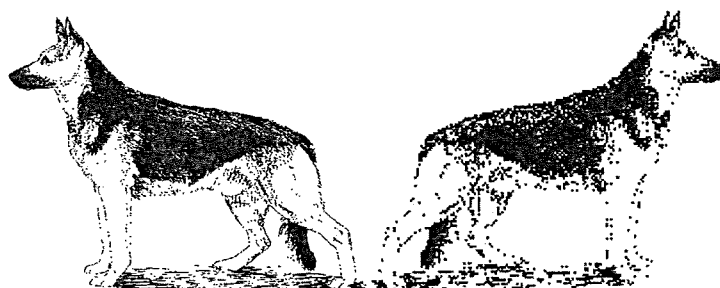
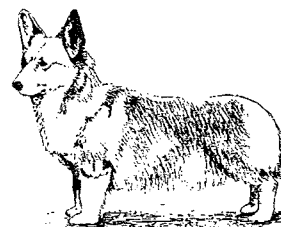
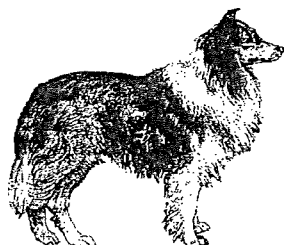


FAITHFULLY YOURS



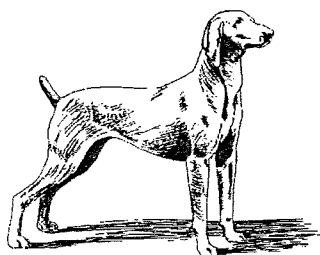
Merry Christmas



ESTABLISHED 1954

Incorporation No A5419H

ABN 79 874 613 605



Geelong Obedience Dog Club Inc
PO Box 186
GEE LONG 3220
Phone: 52 434 555

November 2000
Issue No
106

Training resumes
Sunday
4th February 2001

GEELONG OBEDIENCE DOG CLUB INC

Committee for 2000/2001

PRESIDENT	Leonie Kelleher	52 431 277	Public Officer
VICE-PRESIDENT (1)	Arthur Thorogood	52 441 819	Training
VICE-PRESIDENT (2)	Barbara Mackey	52 414 243	Administration
SECRETARY	Pam Convery	52 290 145	
		Email: jcgret@ozemail.com.au	
TREASURER	Jim Ball	52 484 154	Property Officer
TRIAL SEC/ASS. SEC	Janelle Convery	52 290 145	
		Email: jcgret@ozemail.com.au	
GENERAL COMMITTEE	Wendy McCraw	52 487 865	Canteen Manager
	Fred Lehrmann	52 215 318	Grounds Manager/ Equipment Manager
	Barbara Thorogood	52 441 819	Hall Manager
	Brian Voysey	52 216 332	Publicity Officer
	Fiona Mackey	52 414 243	Social Secretary
	Vacant		Assistant Social Secretary/Raffle Steward
NON-COMMITTEE	Desma Dickeson	52 789 585	Training Supervisor/ Display Team Leader
	Karen Hinkley	52 772 994	Shop Manager
	Sylvia Noblett	52 817 442	Librarian
	Gordon McCraw	52 487 865	Bar Manager
	Vacant		Newsletter Editor
	Vacant		Webmaster

The opinions in the Newsletter are not necessarily those of the Editor or the Geelong Obedience Dog Club Inc. All Committee and Sub-Committee reports bear the name of the respective Officer.

All correspondence should be addressed to:-

THE SECRETARY

PO BOX 186

GEELONG 3213

Visit the Club's website at www.ozemail.com.au/~jcgret

Newsletter closing date for all items – 15th of each month

INDEX

Reports.....	2	Have a Cool Yule!.....	12
Gala Day	5	Christmas Canine Cookies.....	13
Christmas Breakup Itinerary	6	New Members.....	14
Quotes to live by	8	Tracking Workshop Weekend	15
Lost Dog's Home Donations	8	Leave the Wildflowers Alone.....	16
Dog Breeds from A to Z.....	9	Shop Talk.....	18
The Good Trainer's Rules.....	11	General Meeting Minutes	19
Christmas Puppy	11		

REPORT

REPORT

REPORT

REPORT

REPORT

PRESIDENT'S REPORT

Well, it is hard to believe that this is the last Newsletter for the training year. Thank you to all members for the smooth change of grounds recently when our own Club grounds were covered in water. We know it may have been an inconvenience to you, but at least you were able to train your dog. A gentle reminder to always check the Livestock Notices in Saturday's Geelong Advertiser when we have heavy rain.

Christmas is fast approaching as well as the warmer weather. It is important to remember about your dog and car safety in the warmer weather. If it is absolutely necessary to have your dog in the car, please find shade in which to park, wind down the windows and don't be away long. At home leave a plentiful supply of fresh water and ensure there is shade available for your canine companions in the backyard.

In closing, on behalf of all Committee and Instructors, may I wish you, your family and your canine companions a safe and Happy Christmas and New Year.

Look forward to seeing you all in 2001

Leonie Kelleher – President

SECRETARY'S REPORT

Another year has almost gone and with it many of last years New Year Resolutions. Oh well, there is always this New Year.

At present I am in the process of setting up next year's Club Calendar and as always we are in for a very busy time in the first few months of the year. Watch for information about Red Cross Collection Day – Friday 2 March, Walk for Animal Welfare – Sunday 22 April and Spirit of the West Challenge – Sunday 27 May (date to be confirmed) just to name a few events. All current members and new, fully vaccinated puppies will commence training on Sunday 4th February with the new Class 1 commencing on Sunday 11th February. The Office will only be open one day during the week next year, but with extended hours due to other commitments and will re-open on Thursday 18th January from 2.00 pm to 8.00 pm.

Thank you for all the support you have given the Office this year, it has been great to get to Classes and two Obedience Titles for our "boys" goes to prove that training certainly does help, as you have probably been told many times before. I would like to wish everyone a safe and very happy Christmas and may the New Year bring you health, wealth and happiness.

Happy training see you in the New Year.

Pam Convery - Secretary

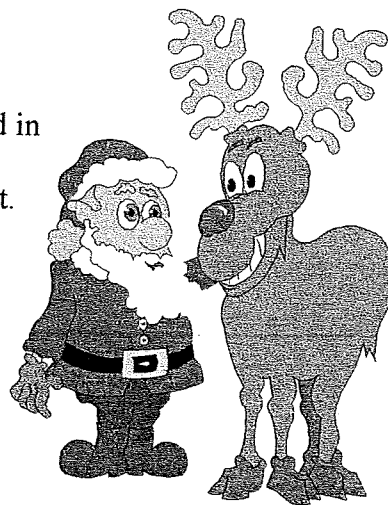
TRIAL SECRETARY/ASS SECRETARY

Thank you to all members who have helped out with the Trials this year and in particular those members who have supported the cake stall at each of the Trials. The table has always been loaded and we do appreciate your support.

Congratulations to all those members who have had a successful year in the Trial ring and other disciplines, I hope to see you back in the new year full of enthusiasm. I'd also like to see some of our newer members trying competition work, so if you need any further information please don't hesitate to ask.

Merry Christmas and a Happy New Year

Janelle Convery – Trial Secretary



REPORT

REPORT

REPORT

REPORT

REPORT

HALL MANAGER'S REPORT

A big thank you to all those who have supported me in my new position. I have not had this job long, but with the recent flooding and refurbishment of the Canteen, things are going along as well as can be expected. Hopefully, in the New Year the hall will be a lot more organised.

Finally, a Merry Christmas and a Happy New Year to all. I hope to see you all using the hall facilities next year.

Barbara Thorogood – Hall Manager

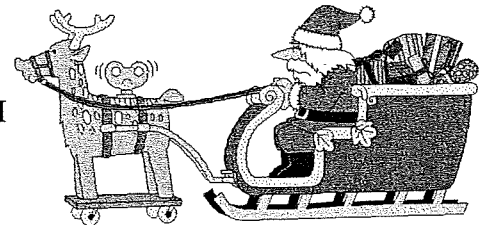
CANTEEN MANAGER'S REPORT

As you all may have realised, over the past month we have been busy refurbishing the Canteen. As we are almost finished, I would like to give a big thank you to all those involved, especially the Canteen Sub-Committee for helping me make all this possible. I hope that everyone will be happy with the results.

You may also have noticed that I have been missing for a couple of weeks, that's because I've just had a baby, and I would like to thank everyone that helped keep the Canteen running while I wasn't there, especially Anne Salaviejus and the girls. I would also like to thank everyone who has volunteered their time to help out in the Canteen throughout the year. It makes life a lot easier with the help of all those involved.

Also, being the last Newsletter of the year, I would like to wish everyone a Merry Christmas and all the best for the New Year, and I hope to see everyone back next year.

Wendy McCraw – Canteen Manager



GROUNDS MANAGER'S REPORT

The end is near! The end of the year 2000 that is! As far as the ground's maintenance is concerned it was an eventless year. Nothing outstanding took place only the normal grass cutting or cleaning up of broken branches and getting the ground in shape for the 3 Trials.

Recently, we had water over the ground for the first time in 5 years and it gave the ground a good soaking, which will be very beneficial for the summer ahead. I thank John Consedine and Tom Hinkley for their assistance in clearing all the little outlet drains so the ground could dry out more quickly

I had talks with some Council Officers in regards to planting new trees and shrubs along the western and southern boundaries. Our present growth is getting to the end of their life span and we must think ahead. The talks were very encouraging and Council seems prepared to supply and participate in the project. We are looking at around May-June next year to start and we will need all hands on deck then to plant hundreds of seedlings.

Recently the grass got a bit longer than usual, as I was reluctant to let the big tractor on the grounds due to the wet and muddy conditions. For all those members who have never experienced a flood on the grounds before, please contact the Club after a heavy rain (25mm or more), just in case we need help to safeguard all the Club equipment.

I wish all of you success at the last testing day for 2000. Have a pleasant festive season and a good break with your dog until training resumes on the 4th February 2001. Thank to everyone that helped me during the year. "Happy New Year".

Fred Lehrmann – Grounds Manager

REPORT REPORT REPORT REPORT REPORT

TRAINING SUPERVISOR'S REPORT

This is my final report for this year. The last few weeks have been rather disorganised due to all the rain and a change of venue, but we are back on our grounds finally!

Our last Promotion Day is looming up on the 10th December, so I wish everyone good luck for the upcoming tests and also remind those who are going for said test, to remember to make sure they give their name to their current Instructor, a week prior to the 10th December.

The Obedience Rally held recently for the Landmine Dog teams has raised in excess of \$1,000.00 – a fantastic result!! Word around the traps is that all who participated on the day had a ball, so congratulations to everyone who attended. Next year we hope to have a similar type of day to raise the profile of other worthy causes.

Gala Day was a huge success and a huge thank you to Sandra McCarthy who organised and did most of the hard work – the float looked fantastic.

Before closing, I would like to say a huge thank you to all the hard-working Instructors and wish them all a great holiday break – they have certainly earned the rest.

Happy Christmas and New Year to all
Desma Dickeson – Training Supervisor

SHOP MANAGER'S REPORT

Merry Christmas and a Happy New Year to you all.

We hope that you have all bought a special treat to put under the Christmas tree for your canine friends. Seriously, the shop has still some things that will make your dog's Christmas as much a special day, as we hope the day is special for you.

We also have a couple of things to make the summer a bit more pleasant for your dog such as Biting Insect Repellent, etc. Please come and see us any time during Sunday or the office hours during the week when Pam will help you.

Thank you for your support of the shop over the last 12 months and again please have a happy and safe Christmas.

Karen and Tom Hinkley – Shop Managers

BAR MANAGER'S REPORT

At the moment we are reviewing the current hours that we are licensed to open the Bar. With a bit of luck we will be able to change those hours so they better suit our needs. So I would hopefully like to see some more members come and enjoy a friendly drink at the Bar at affordable prices.

I would like to wish everyone a happy Christmas and all the best for the New Year. I hope to see you here safe and sound next year.

Gordon McCraw – Bar Manager



GALA DAY



Firstly a big thank you to all those volunteers who helped with decorating the truck and all those who took part in the parade. To all those who didn't or couldn't take part – you missed out on a great day.

A couple of weeks before the parade I was asked to chair the Gala Day Sub-Committee.

Never having done this before, I was quite worried something would go amiss, but it wasn't to be. On the Thursday night I had a house full of people, all putting their personal touches to the Club float. We all stood back and admired our work, patting ourselves on the backs. Then the heavens opened up and I stood watching, waiting for the decorations to be washed down the street. But luckily, the only casualty was a balloon.

On the actual day of the parade, there was a lot of rushing around (mainly by me) making sure the final touches to our float were put into place and that people knew what was expected of them during the parade.

Then we waited, and waited and waited some more. Which really wasn't so bad as it gave us a chance to see everybody else's effort.



Finally our turn came to march. The rain held off, there were plenty of wagging tails and big smiles, which made our walk through town a success.

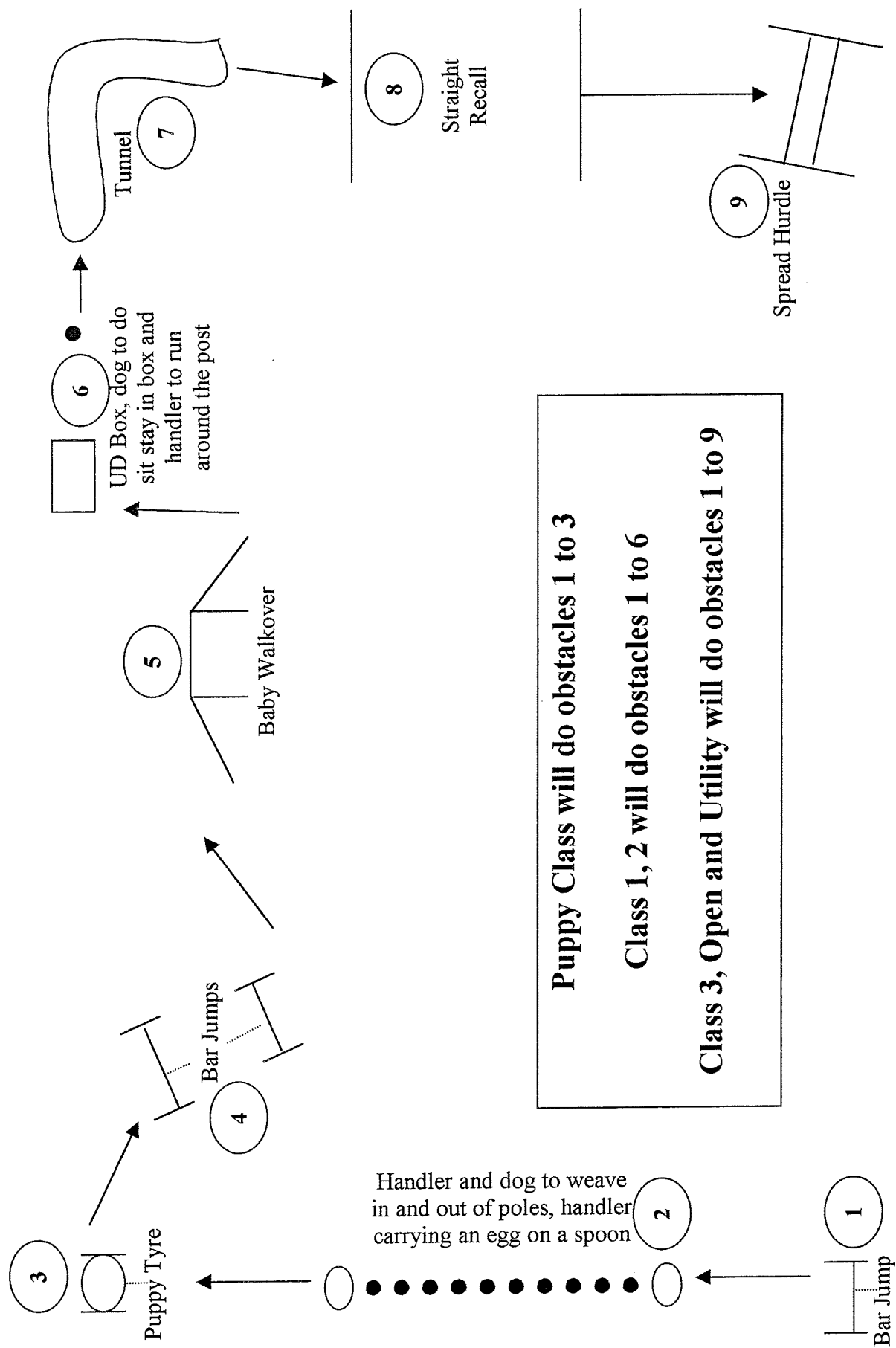
Sandra McCarthy – Chairperson, Gala Day Sub-Committee



ITINERARY FOR GODC CHRISTMAS BREAKUP SUNDAY 17 DECEMBER 2000

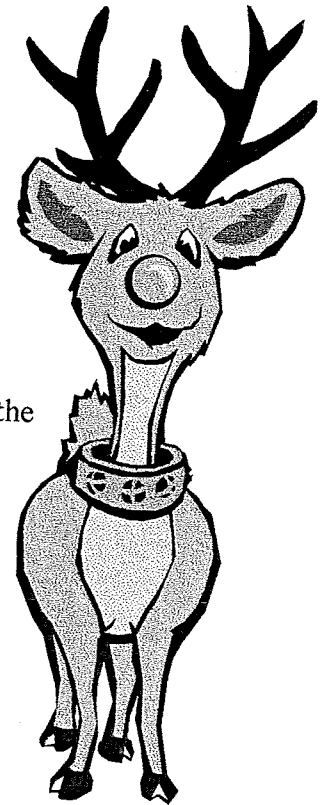
9.30am - 10.30am	1 st and 2 nd session Classes will be combined. <u>All</u> Classes will commence at 9.30 am.
10.30am - 11.00am	Santa Claus will arrive at 10.30 for the children. Val Moeller and "Caden" will be there with the cart.
11.00am - 11.30am	Presentation of End of Year Trophies, Title Medallions, Special Awards and Certificates from the last Promotion Day.
11.30am -	Free Sausage Sizzle on the verandah. Free tea & coffee available in the Canteen Fun events: <ul style="list-style-type: none"> ▪ Obstacle Course (see next page for the Course) ▪ Best Dressed Christmas Dog ▪ Fastest Good O eater ▪ Fastest Recall ▪ Drop closest to the rope ▪ Instructor's class (handling other people's dogs) ▪ Best represented breed

Obstacle Course for the Christmas Breakup (to be held inside the Chain Ring)



Quotes To Live By - Author unknown

1. A day without sunshine is like, night
2. I just got lost in thought. It was unfamiliar territory.
3. I feel like I'm diagonally parked in a parallel universe.
4. You have the right to remain silent. Anything you say will be misquoted, then used against you.
5. I wonder how much deeper the ocean would be without sponges.
6. He who laughs last thinks slowest.
7. Eagles may soar, but weasels don't get sucked into jet engines.
8. The early bird may get the worm, but the second mouse gets the cheese.
9. Borrow money from a pessimist - they don't expect it back.
10. When everything's coming your way, you're in the wrong lane and going the wrong way.
11. If at first you don't succeed, destroy all evidence that you tried.
12. A conclusion is the place where you got tired of thinking.
13. Experience is something you don't get until just after you need it.
14. Success always occurs in private and failure in full view.
15. The sooner you fall behind the more time you'll have to catch up.
16. A clear conscience is usually the sign of a bad memory.
17. Plan to be spontaneous - tomorrow.
18. Always try to be modest and be proud of it!
19. If at first you don't succeed, then skydiving isn't for you.

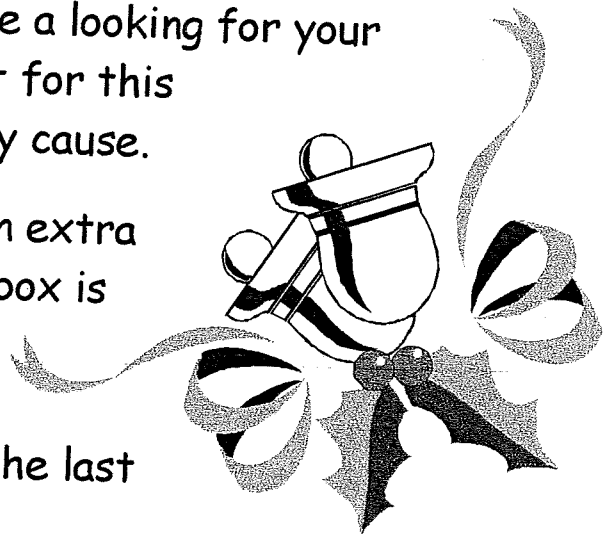


LOST DOG'S HOME/ANIMAL WELFARE DONATIONS

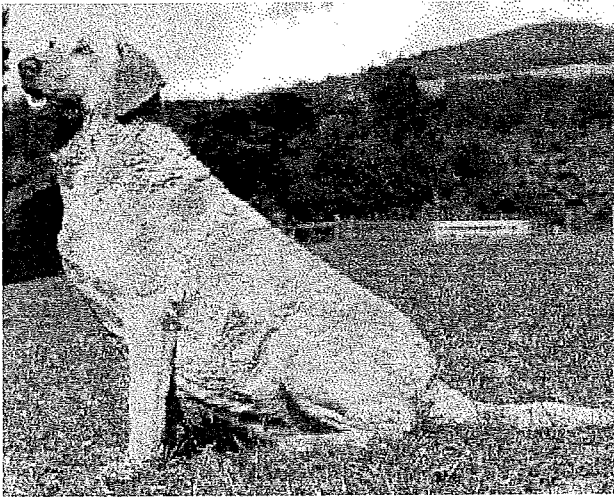
Each year the Club collects tinned and dry dog and cat food items as a special Christmas treat for those pets that are not so fortunate as our companions.

Once again we are looking for your support for this worthy cause.

So, when you are out shopping add an extra can or packet to your purchases. A box is available in the Clubrooms for your donation and all donated items will be presented to Animal Welfare on the last day of training - 17th December.



Dog Breeds from A to Z



Chesapeake Bay Retriever

Very much a rugged working animal used for hunting in the most adverse weather conditions and immune to pampering, this is a loyal and friendly dog, which is very attached to those he knows.

The Chesapeake Bay Retriever is an American breed whose two direct ancestors were recovered from a shipwreck off the coast of Maryland, USA. They were possibly Newfoundlands, noted for their retrieving ability, which were crossbred with other dogs used as sporting dogs in the area. By 1885 the Standard was established, and a club for the breed was formed in 1918. The breed became renowned for its retrieving ability and

hardiness in the freezing waters around the Chesapeake Bay in the duck hunting seasons, and took its name from the area.

The Chesapeake Bay Retriever is a medium, solidly built dog. Height: 23 - 26 in (58.5 - 66 cm) for the dog and 21 - 24 in (53 - 61 cm) for the bitch. Weight: 65 - 75 lb (29.5 - 34 kg) for the dog and 55 - 65 lb (25 - 29.5 kg) for the bitch.

The skull is round and broad with a medium stop and short muzzle. The eyes are medium-sized, clear yellowish brown and set well apart. The ears hang freely, are small and set high. The body is medium-sized and the tail is straight or curved slightly. The Chesapeake has a coarse, oily outer coat with a wave on the neck, shoulders, back, and loin. The undercoat is dense, but fine and wooly.

This combination keeps the freezing water from getting through to the dog's skin, as the oily outer coat will shed the bulk of the water after a good shake. The coat color varies in the Chesapeake from a dark brown to a faded tan or "deadgrass." The coat color has been bred to match the colors of the hunting surroundings, particularly the "deadgrass" color, which is the shade of dull straw.

The Chesapeake Bay Retriever is a large confident dog, with an even-tempered personality. Although this dog is a powerful athlete, it is slow to anger and remains very loyal. Its alert manner and devotion to the family, combine to produce an excellent watchdog.

This adorable retriever gets along very well with most other dogs, although there are still benefits to be gained from early socialization. The Chesapeake Bay Retriever retains its excellent working dog abilities yet still makes a wonderful companion animal for families. However, care should be taken not to let this powerful dog knock over small children in play. When given lots of attention, this marvelous retriever will reward its owner time and again with its loyalty. Some Chesapeake Bay Retrievers, especially the females, can become snappy if allowed to go unchecked. As it is possible that this behavior is genetic, both parents should be seen before choosing a puppy.

The Chesapeake Bay Retriever benefits from regular exercise and if passively encouraged as a puppy, will love to swim in open water. This dog is normally a voracious eater and can sometimes put on excess weight if not allowed too exercise vigorously. The Chesapeake Bay Retriever should have its ears regularly checked, particularly in warmer weather. The coat should have major tangles removed after exercising. However, it is better not too brush the dog to vigorously until after the coat has dried out. This dog is a truly magnificent retriever and will reward its owner with boundless affection and loyalty.

Dog breeds from A to Z (cont)



Chihuahua

The Chihuahua is a lively little dog suitable for small flats or apartments. It is not recommended for children, as it does not have the size or strength to cope with rough handling, but makes an ideal pet for the elderly.

The Chihuahua is thought to have originated in Mexico, or could have migrated with the Spanish conquests of the Aztecs. Some feel that the breed may be depicted in Aztec monuments, but others feel the engravings could have been of rodents. There are now two types of Chihuahua: the long-coated and the smooth-coated. The smooth-coated is the

newer of the breeds and was developed early this century by crossing the long-coated breed with small American Terriers such as the Black and Tan Toy to produce the smoother coat.

The Chihuahua is the world's most easily recognized breed of dog, and the smaller the dog, the more valuable. They are alert and lively. Height: around 8 in (20.5 cm). Weight: 2.24 - 7.5 lb (1 - 3.5 kg). The head is an apple shape with large, round, and dark but not protruding eyes. Black noses are more valued than the pink or light. The ears are large and carried erect when in motion, but set at a 45-degree angle when resting. The body is deep but short and the tail is long, set high, and curled over the back, tapering to a point.

The coat in the smooth-coated breed is short, dense and lustrous. In the long-coated breed the hair is long, silky, and may have a wave. There is feathering on the trunk, tail and legs, and a ruffled neck is desirable.

Because of its diminutive size, people are sometimes fooled into thinking this dog is very passive. However, this tiny dog has a huge spirit. Certainly, the Chihuahua would not be much use as a guard dog, but its abilities as a watch-dog should not be overlooked. It is quite capable of alerting its owner to the presence of an intruder.

If the Chihuahua is given the opportunity to socialize with other dogs when it is a puppy, it rarely has problems in later life. The Chihuahua is often given favored status when a family has several dogs in a household. Care should be taken when outside the house that larger dogs do not act aggressively to your bossy Chihuahua.

This dog has been selectively bred to be a companion animal for people. This does not mean, however, that it automatically likes all people, in all circumstances. Wise owners should not allow too much rough play or teasing of their dog as it may either become injured or bite. All dogs have a limit to their tolerance. However, the Chihuahua does make an excellent pet, especially for single or elderly people, or families with older children.

The Chihuahua truly thrives on the attention it receives from its owner, and can suffer from separation anxiety if left alone for extended periods. This dog is generally kept inside and often sleeps on its owner's bed or nearby. If you do keep your Chihuahua outside even temporarily, it must be provided with a proper kennel with plenty of protection against drafts and the cold.

The Good Trainer's Rules

(adapted from Glen R Johnson's Tracking Dog book rules)

1. If the dog is not giving full attention while in training, then I am not providing the necessary motivation to keep him interested - it is my fault.
2. If the dog is not learning the objective I have set for him to learn – I have designed the learning situation incorrectly - it is my fault.
3. If the dog cannot handle an unexpected situation - I have not prepared him for that situation - it is my fault.

When in doubt about these rules, use the following rule as a guide:-

Always make sure the higher IQ is at the end holding the lead.

CHRISTMAS PUPPY

AUTHOR UNKNOWN

Twas the night before Christmas, when all
through the house
Not a creature was stirring, not even a mouse;
The stockings were hung by the chimney with
care,
In hopes that St. Nicholas soon would be there;

The children were nestled all snug in their beds,
With no thought of the dog filling their head.
And mamma in her 'kerchief, and I in my cap,
Knew he was cold, but really didn't care about
that.

When out on the lawn there arose such a clatter,
I sprang from the bed to see what was the matter.
Away to the window I flew like a flash,
Figuring the dog was off his chain and into the
trash.

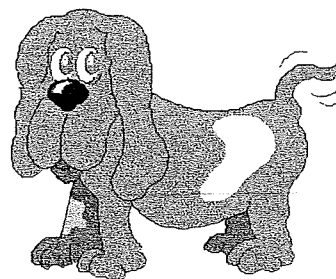
The moon on the breast of the new-fallen snow
Gave the luster of mid-day to objects below,
When, what to my wondering eyes should
appear,
But Santa Claus there - with eyes full of tears.

He unchained the dog, once so lively and quick,
Last year's Christmas present, painfully thin and
sick.
More rapid than eagles he called the dog's name.
And the dog ran to him, despite all his pain.

"Now, DASHER! now, DANCER! now,
PRANCER and VIXEN!
On, COMET! on CUPID! on, DONDER and
BLITZEN!
To the top of the porch! To the top of the wall!
Let's find this dog a home where he'll be loved
by all"

I knew in an instant, we'd have no gifts this year,
For Santa Claus had made one thing painfully
clear,
The gift of a dog is not just for the season,
We had gotten the pup for all the wrong reasons.

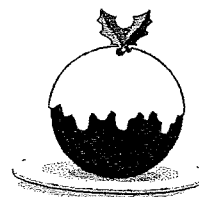
In our haste to think - for the kids - a gift
There was one important thing that we'd missed.
A dog should be family, and cared for the same
You don't give a gift, then put it on a chain.



And I heard him exclaim as he rode out of sight,
"You weren't giving a gift! You were giving a
life!"

Have a Cool Yule!

Reprinted courtesy of Dog's Life Magazine
Author - Leanne Davies



You've imagined what Christmas will be like with your dogs. They'll be perfectly behaved, greet your friends and family with a gently paw shake and a smile, and will sit quietly while Christmas dinner feeds the clan. But in reality, Christmas can be a chaotic times for your dogs and before you know it, they will have chomped their way through the ornaments, eaten the entire Christmas pudding and brought up their Christmas dinner all over the pressies.

Instead of enjoying the holidays, you could be left cleaning up a lot of mess – or worse, heading for the nearest vet clinic to remove your mother-in-law's perfect gift from the inside of your dog's bloated stomach.

Christmas Hazards

Problem: Fairy Lights

Dogs can tangle themselves in the lights, eat them (the lights often contain moderately toxic ingredients), or chew through the cords and electrocute themselves.

Solution:

The best way to keep lights away from your pooch is to wrap them through the interior of the tree, high enough so your dog can't reach. The cords are best run underneath the skirt of the tree, hidden from the dog.

Problem: Baubles and Tinsel

Vets report an increase in emergency surgery around Christmas time because dogs attempt to eat the enticing looking tinsel from the Christmas tree. Ingestion of tinsel can cause bowel blockages and make your dog sick. Ornaments are also a danger as eating them can cause choking and blockages.

Solution:

Make sure you hang ornaments high in the tree out of reach of your dog, along with the tinsel. Supervise you dog around tinsel or ribbon.

Problem: Artificial Snow

This is toxic to dogs

Solution:

Spray in areas inaccessible to dogs, like on the tops of windows and the higher parts of the Christmas tree. Remove the spray can immediately and place out of reach of canine paws.

Problem: Candles

These make wonderful decorative pieces but make sure you keep them out of reach of dogs. Not only is there the danger of your dog being burnt, but it could accidentally knock them over in Yuletide excitement and start a fire in the house.

Solution:

Try using hanging candles, which can be placed out of reach of your dog and only light the candles when the guests have arrived and are settled.

Problem: Guests

When all the family and friends arrive for Christmas dinner, your dog may be overwhelmed by all the sudden noise and activity.

Have a Cool Yule – Dog's Life magazine (cont)

Solution:

Introduce your dog to the guests and ensure young children know how to correctly approach and pat it. Ask your guests not to feed the dog because even if each person only gives the dog a titbit, by the end of the night it may have consumed an extraordinary amount of food. You should also make sure there is a quiet "time out" spot where your dog can go to escape the crowds.

Problem: Food

Christmas fare will be too rich for dogs and can add to problems like hyperactivity and stomach upsets, not to mention obesity.

Solution:

Make sure food is not left unattended when it's out of the fridge. And remember, chocolate can be seriously toxic to dogs. Dogs don't digest it well and it's bad for their teeth. We could also be "treating" our dog to a rare but deadly condition called chocolate toxicosis, cause by the substance theobromine. Although rare this condition is fatal.

Problem: The Presents

Some kids' toys with small parts can be dangerous if ingested by your dog. And presents containing food can easily be sniffed out by Fido's sensitive snout.

Solution:

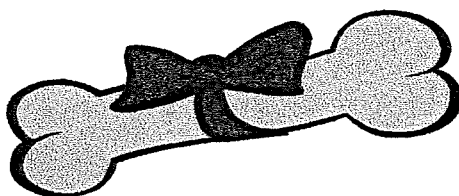
If your dog is sniffing around the tree, remove the presents to a safe area.

Problem: Alcohol

Alcohol can be toxic – especially for small dogs – and can cause poisoning and can even lead to a dog falling into a coma.

Solution:

Lay down a few house rules with the guests, and when things get a little rowdy, put your dog in the quiet part of the house.



Christmas Canine Cookies

Christmas Dog Biscuits

Ingredients:

1 ¾ cups wholemeal flour
2 tablespoons freshly chopped garlic
½ cup cornflour
2 rashers bacon, chopped

1 teaspoon stock
8 tablespoons sunflower oil
¾ cup water

Method:

Mix ingredients together well and roll out the mixture until it is about two centimetres thick. Cut out designs with Christmas cookie cutters and place in oven. Baste with a small amount of oil or bacon fat and cook for 35 to 45 minutes at 350 degrees. Allow to cool. Garnish with desiccated coconut or fresh parsley then place in Christmas bags or boxes lined with foil. Seal bags to keep in freshness. Give them to friends with dogs or store them away ready for your own pooch to enjoy as a delightful Christmas morning treat

NEW MEMBERS

The Committee, Instructors and Members would like to welcome the following new Members who have joined the Club recently

5/11/2000

Forssman Jason/Duff Kara
Cutler Jacqueline
Collins Family
Burgoyne Corinne
Sim Jenni
Dorling Family
Arnold Fiona

Gleeson Brenda
Dunlop Emily
Lynch Melissa/Fairnie Brett
Henwood Nicole
Murphy Susan
Powell Kevin

Baran
Blanch Family
Shell Sara
Skudutis Jacque
Wheeler Family
Lloyd Stuart/Elderkin Tania

2/11/2000

Maurer Vikki
Hlavac Sheree/Diamond Paul
Turner Family

Allum Family
Gardiner Donna

Williams Jane

22/10/2000

Brennan Susan
McMahon Christine

Edge Family
Phillips Anne

Price Robert
Bubb Jason/Schroder Tineke

CHRISTMAS PARTY

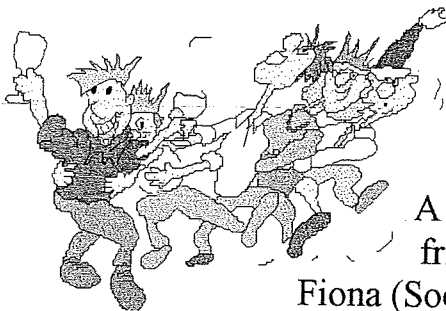
Friday

8 December 2000



Spit Roast Dinner and
Karaoke night

\$15.00 per head



A fun night for all and a chance to get together with family, friends and Class members. Tickets are available from
Fiona (Social Secretary)

Tracking Club of Victoria Inc

ANNUAL

Tracking Workshop Weekend

DATE

Friday 19th January to Sunday 21st January 2001

VENUE

German Shepherd Dog Club of Victoria Inc – Ballarat Branch
Mooreshead Park Ballarat – and surrounding area

COST

Members..... \$40.00 each

Non Members.... \$50.00 each

Includes all meals. Please bring your own plates and eating utensils
also food for your dog

TIME

Arrive at Mooreshead Park on Friday approximately 6.30 pm, BBQ tea following arrival Friday evening
Concluding on the Sunday at approximately 2.00 pm

ACCOMMODATION

You can bed down in the GSDCV Club Rooms, or you may wish to make your own arrangements.
Sleeping bags, etc are suggested if you intend to bunk down in the Clubrooms over the weekend. Toilet
facilities are available at the Clubrooms, but no shower.

If you wish to be part of this very enjoyable and informative weekend please fill in the following
registration form and return it with your cheque to:-

Mrs Andrea Sciberras, 11 Ottawa Ave, Blackburn 3130. Telephone (03) 9877 1528

by Monday 8th January 2001

(Cheques payable to:- Tracking Club of Victoria Inc)

Tracking Club of Victoria Inc Workshop Weekend 2001

Name Telephone No

Address

--- Number attending

How many dogs will accompany you? (If any).....

If you are vegetarian or vegan please state "yes" here

Do you have a harness for your dog? Cheque enclosed \$.....

Leave The Wildflowers Alone

By Charlotte Schwartz "Off-Lead" February 1979

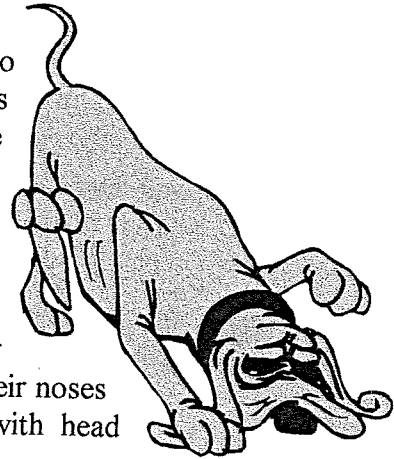
I found them the day before along the roadside. So young, delicate, and lovely. A whisper of butterfly blue amid the browns and greens. I wanted them to be mine, so I brought them home. The next morning they were dead.

Now, months later, as the elements of winter forced me indoors for most of the day, I remembered them - wild asters. I saw a picture of them in my wildflower book and it made me sad to think I had killed them when all I wanted to do was enjoy them longer.

Later that same day, in an Open class, I saw several handlers trying to kill the wildflowers in their dogs. I stopped the class and told them the story of my wild asters. I cautioned, "Train your dogs to each dog's fullest potential, but leave the wildflowers alone". Let me explain.

Each breed was originally bred for a specific purpose ... some to work, some to hunt, some to retrieve, some to burrow. When we forget the original intent for our dog's very existence and attempt to train out those behaviours, which are unique to that particular breed, we frustrate the animal. Frustrate the dog enough and he begins to substitute other behaviours, usually undesirable, in their place. This in turn upsets the handler and he becomes angry. The problem grows.

Take one frustrated dog and one frustrated handler and we destroy the proper atmosphere for learning. All we do is condition the dog to act in an uncooperative manner and the handler to be hostile towards the dog. The next step follows very naturally. The dog hates the learning process *and* the person responsible for creating the hostile atmosphere. The handler hates teaching and the student he started out loving in the first place.



Let's look at some specific wildflowers in the dogs we see in obedience classes in the United States. Take scent hounds, for example, Beagles, Bassets, Dachshunds. They've been bred to use their noses to hunt; it seems perfectly natural to them. I suspect, to walk with head lowered, taking in the smells of those who have passed ahead of them.

Yet how many times do we hear scent hound handlers reprimand, "No sniffing" and give a quick jerk on the collar. Wouldn't it be better to work the dogs in short, lively sessions with a favourite toy or treat held in the left hand? The dogs would have something interesting to watch as they heeled along and quite soon they'd be conditioned to picking up their heads when they hear the command "Heel".

Two of my students, Roxanne and Linda, have proven this theory beautifully. Roxanne has handled a loveable Basset named Cleo to a High in Trial. Linda has trained two Beagles, Lucy and June, to work with head held high, eyes on her and tails wagging. The wildflowers are still there in each dog, and both girls did it with positive reinforcement.

A Komondor named Daphne has learned from her handler, Debbie, to be gentle and polite in class and when out in public. Yet Daphne assumes a very protective nature when at home. Carol, Dorothy and Nancy all handle large, serious working dogs. A Doberman Pinscher, a Rottweiler and a German Shepherd Dog. Yet each handler has taught her dog, through positive methods, that obedience class and trials are places where dogs must accept attention from other people without exhibiting aggressive behaviour.

Leave the Wildflowers alone (cont)

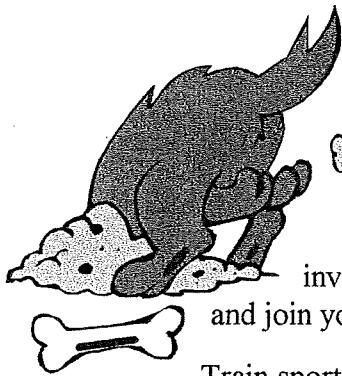
Training a dog to pay attention to his handler, execute certain obedience exercises and, generally, assume his share of the responsibility for the team's performance is a very achievable goal. But to realize that goal and leave the dog's basic breed instinct intact takes a little bit of thoughtful planning.

Instead of correcting him for behaviours, which are hereditary to him, substitute. That's the key word. As I mentioned earlier, give a scent hound something to look at. Don't correct or sniffing praise for paying attention.

Take the serious breeds and create happy atmospheres for them in which to learn. Dogs are, in many ways, like children. When they feel a friendly, cheerful air exists in the class and at trials, most love to join the celebration. Yet, when they're home or feel their owners safety is jeopardised, they quickly sense the impending peril and act protectively.

Let a sight hound be just that. He can learn to heel and sit and come on command. But allow him time to run in an open area several times a week. Encourage him to race and chase and be proud that he is what he is. And praise heartily for positive responses to obedience commands.

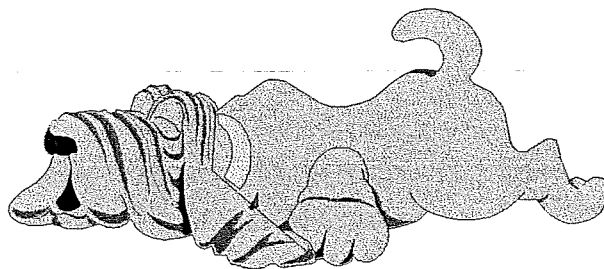
When a terrier digs a hole or challenges another dog, don't think he's trying to destroy your yard or kill the other dog. He's just being a terrier. Go out and admire his hole and tell him how beautiful it is. Then give him a digging area in the yard and teach him to use it. He can learn to do his digging in one place if taught with a positive approach. As for the fighting, distract him. Correcting him with a sharp snap on the lead simply serves to psyche him up even more. Instead, call him to you in an excited tone of voice and get his mind on a favourite toy or game. Be so inviting with your enthusiasm for the game, he'll forget his canine challenge and join you. Then praise.



Train sporting dogs, Setters, Spaniel and Retrievers, to be good, obedient companions, both in and out of the ring. But never let them lose the love of life and will to run which has been their birthright since their breeds began. Take them for long walks. Let them swim and retrieve just for fun. They, too, need to keep their wildflowers alive.

When you think about it, owners usually buy dogs of specific breeds because they found something they liked within that breed that was a unique, breed characteristic. Somehow, when they get into obedience training they lose sight of that quality and try to train it out of them thus destroying the thing that turned them on to the breed in the first place. (Very possibly, that's where a lot of the bad publicity about obedience training originates. We've all heard breed fanciers say obedience destroys the dog's spirit!)

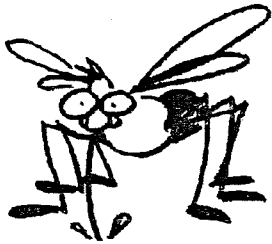
In short - Don't pick the wildflowers. Look to your heart's content, but leave them along the side of the road to bloom another day. That way, you'll always have them to enjoy.





SHOP TALK

Don't forget your canine companion's gift under the tree this Christmas. Call in and see Karen or Tom for a variety of rawhide stockings and toys for your four-legged friend.



With so many mosquitoes around after the heavy rain, your dog needs protection too. The equipment shop has Fly Repellant Cream for flies and biting insects specially formulated for our pooches.



Also available Guide Dog Association Calendars and Christmas Cards with all proceeds going to the Guide Dog Association.

TOTAL PET CARE

now at

HIGHTON AND WAURNVALE



**88 BARRABOOL ROAD,
HIGHTON 52 430077**

**SHOP 603, WAURNVALE SHOPPING
CENTRE, GROVEDALE 52430002**

ALL VETERINARY SERVICES PLUS
BIRD MEDICINE, ACUPUNCTURE, BEHAVIOUR,
PUPPY CLASSES AND GROOMING

GENERAL MEETING

3 October 2000

Meeting opened: 9.07 pm

Apologies: As per Annual General Meeting

Minutes from the previous General Meeting as distributed in the Newsletter, taken as read. Minutes from Special General Meeting distributed at Meeting.

Acc: A Thorogood

Seconded: C Davies

Carried

Business arising from the Minutes

1. It has been decided that the Club would not take part in the Animal Expo - 9-11 February
2. L Kelleher suggested that discussion on the Kitchen Upgrade be deferred to General Business

Correspondence Out – Surf Coast Shire Council, VCA re Affiliation Charges, Canine Control Council (Queensland) re Nationals, VCA re battery collars

Correspondence In – VCA re battery collars, Berwick Obedience Dog Club, Berwick Obedience Dog Club Agility Team, VCA re Affiliation Fees, Delta Update, C of G G re Volunteer work, VCA re KCC Park, ACT Canine Association

Acc: D Dickeson

Seconded: M McNair

Carried

Business arising from Correspondence

Nil

Treasurer's Report

J Ball presented written report and asked that all accounts be passed for payment

Acc: B Mackey

Seconded: K Ciezarek

Carried

Other Reports

Training Supervisor – D Dickeson read written report. Report attached to Minutes Book

Sub-Committee Reports

Rally Cross Fundraiser 15 October – Classes to commence at 10.00am. Starting in groups of 10. Sausage Sizzle to be held.

Gala Day Sub-Committee – P Convery to check with A Trueman regarding entry to Gala Parade.

Acc: K Devlin

Seconded: B Voysey

Carried

General Business

1. W McCraw gave report on Image Kitchen and Hire-a-Hubby quote. Work to be commenced as soon as possible.
2. B Thorogood is prepared to fill one of the General Committee positions. P Convery moved 'that B Thorogood be elected to General Committee'.
Seconded: D Dickeson

GENERAL MEETING

3 October 2000

3. J Convery spoke regarding changes to the Agility Rules for 2001 and asked if the Club would consider running 3 Trials on the one day in May. F Lehrmann moved 'that we accept the proposal to run three single round Trials on Saturday 5 May 2001'.
Seconded: L Gaylard
Carried
4. C Davies spoke regarding an incident where she needed information from the Council's Dog Registration database and found the information was unavailable.
5. F Lehrmann has contacted the Council regarding the replacement of the post on the back paddock gate.
6. P Convery said she has contacted the Liquor Licensing Commission with regard to changing the Club's Bar hours. Information is being sent, Members suggested this should be discussed at December's General Meeting.
7. Committee Meeting for the new Committee – Monday 9th October – 7.30 pm

As there was no further business

Meeting closed at: 10.00 pm

